

CAMPUS DE L'UNIVERSITE DE BOURGOGNE

CONSTRUCTION D'UNE SALLE MODULABLE

Maitre d'Ouvrage : CONSEIL REGIONAL DE BOURGOGNE 17 Boulevard de la Tremolle 21000 DIJON

Architecte : Laurent PIERRE et Kaan COSKUN
34 rue de l'Europe 21121 FONTAINE LES DIJON tel 80.56.47.04 - (0)48.04.79.39

Entreprise : SAE Rue des Creuzots BP 609 21016 DIJON cedex tel 80.58.99.30

HA8

Bureau d'Etudes 13 Rue Ste Anne
21000 DIJON

tel 80 30 45 23

fax 80 30 86 63

dessine par :

BU

Dijon le :

31-10-95

responsable

AL

echelles :

1/50 1/25

dossier :

95050

ELEVATION PIGNONS
ELEVATION PORTIQUES

coffrage ferrailage

page 1

DOE

plan :

10^C

Indice	date	modifications	demandeur
A	9/11/95	ajouté poutres portiques	
A	10/11/95	modifie aciers 1-2-4-5	
A	30/11/95	mise a jour	

CARACTERISTIQUES MECANQUES DES MATERIAUXBETON

fc 28

25

MPa

ACIERS

Barres H.A. : fe E50 : fe = 500 Mpa

Ronds lisses : fe E24 : fe = 235 Mpa

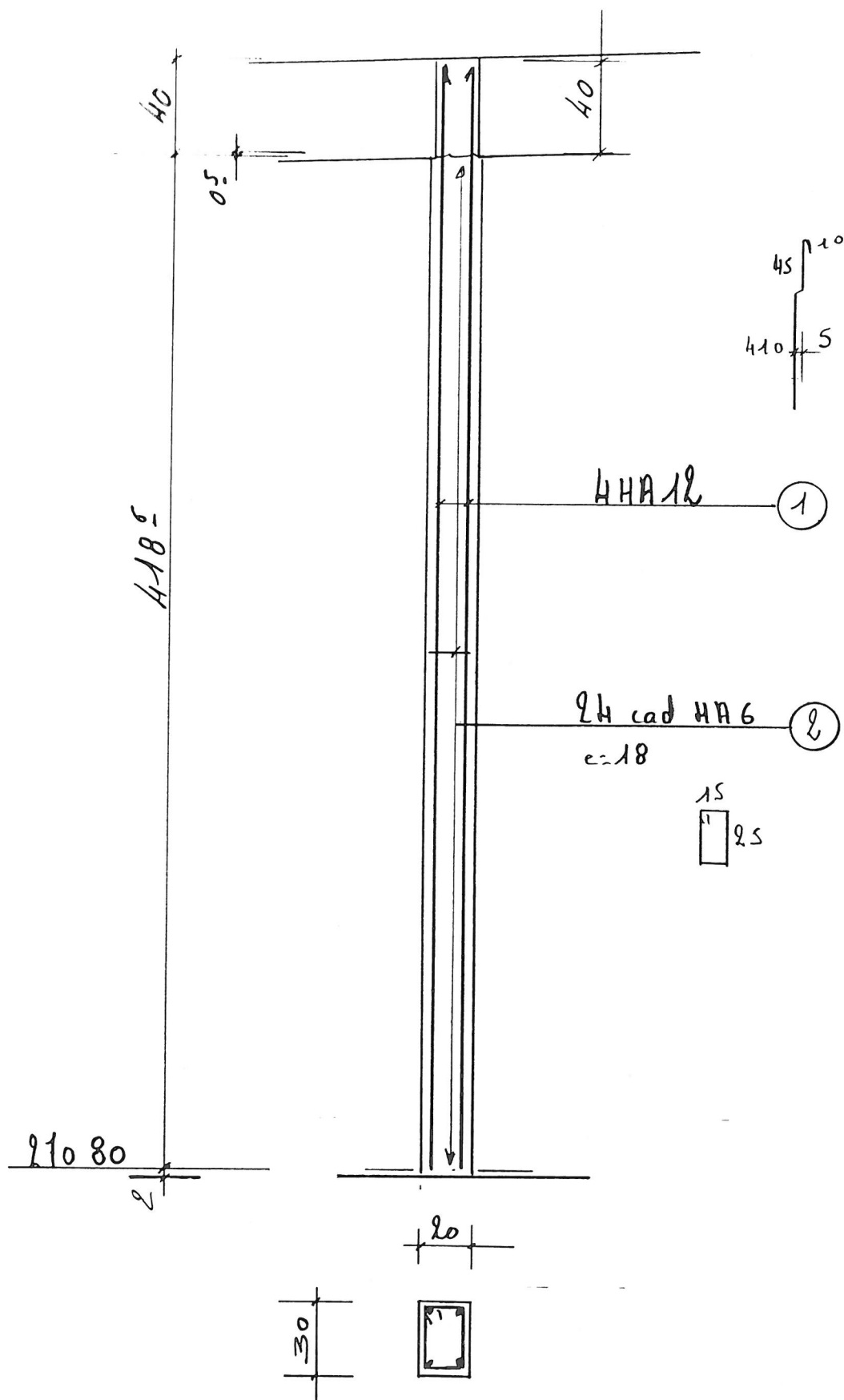
Treillis soudés : T.S.L.

T.S.H.A.

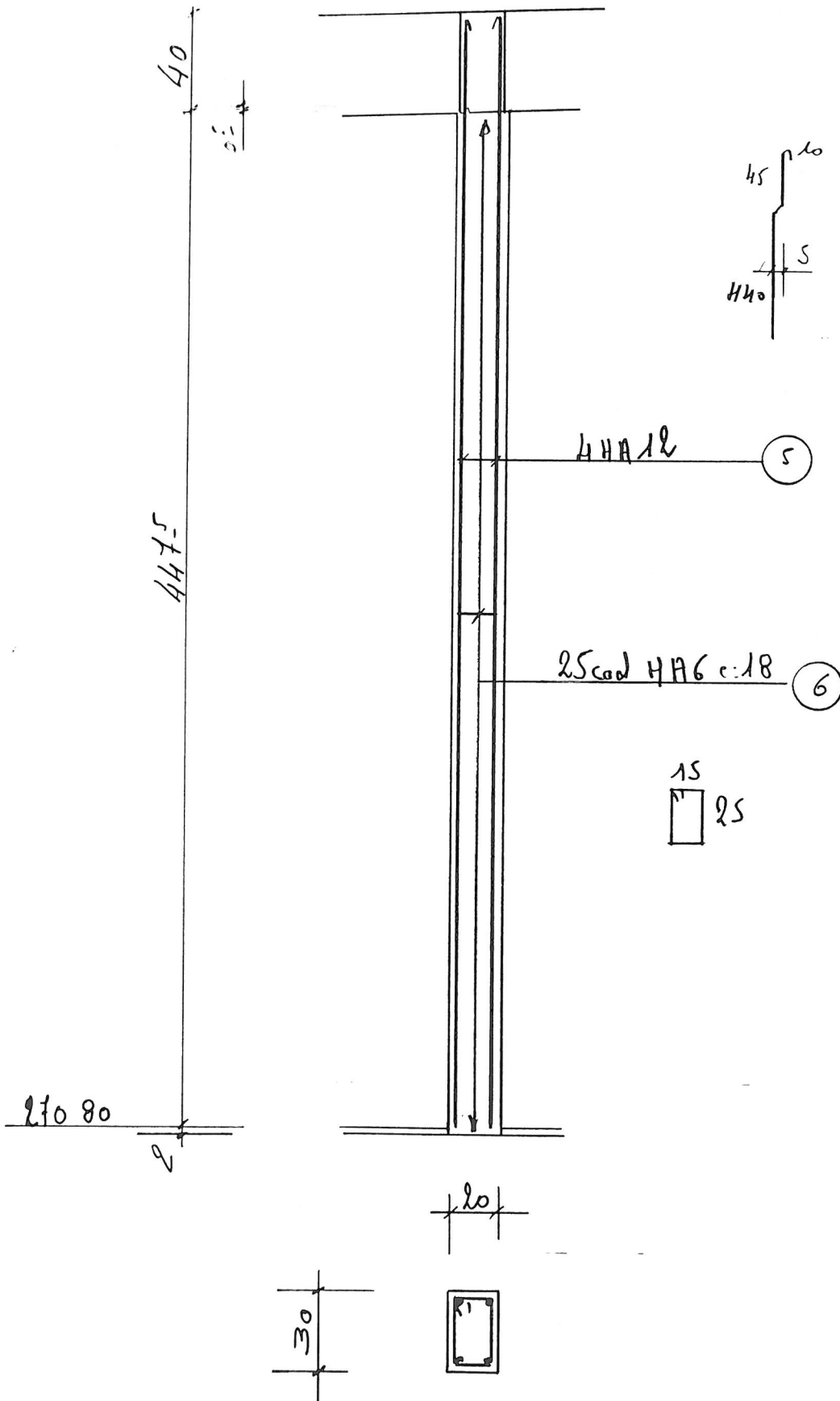
fe = 500 Mpa

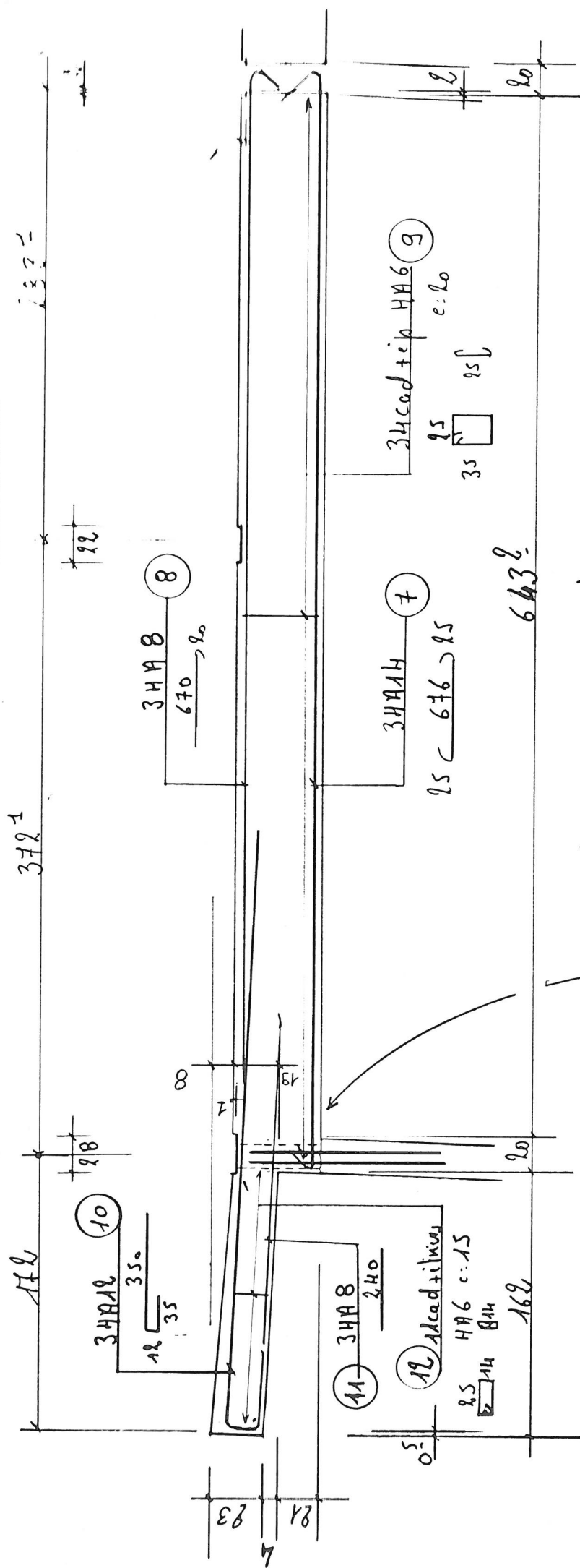
Nota : les clavetages seront
réalisés avec du mortier
sans retrait (Clavex
ou similaire)

- P1 nb 2 -



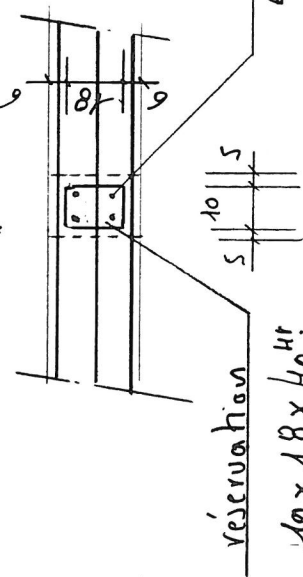
- P3nb 2 -





Ne pas couper les aciers
dans la réservation

leverage 2612

Vue en plan

97416

reservation

80	40
----	----

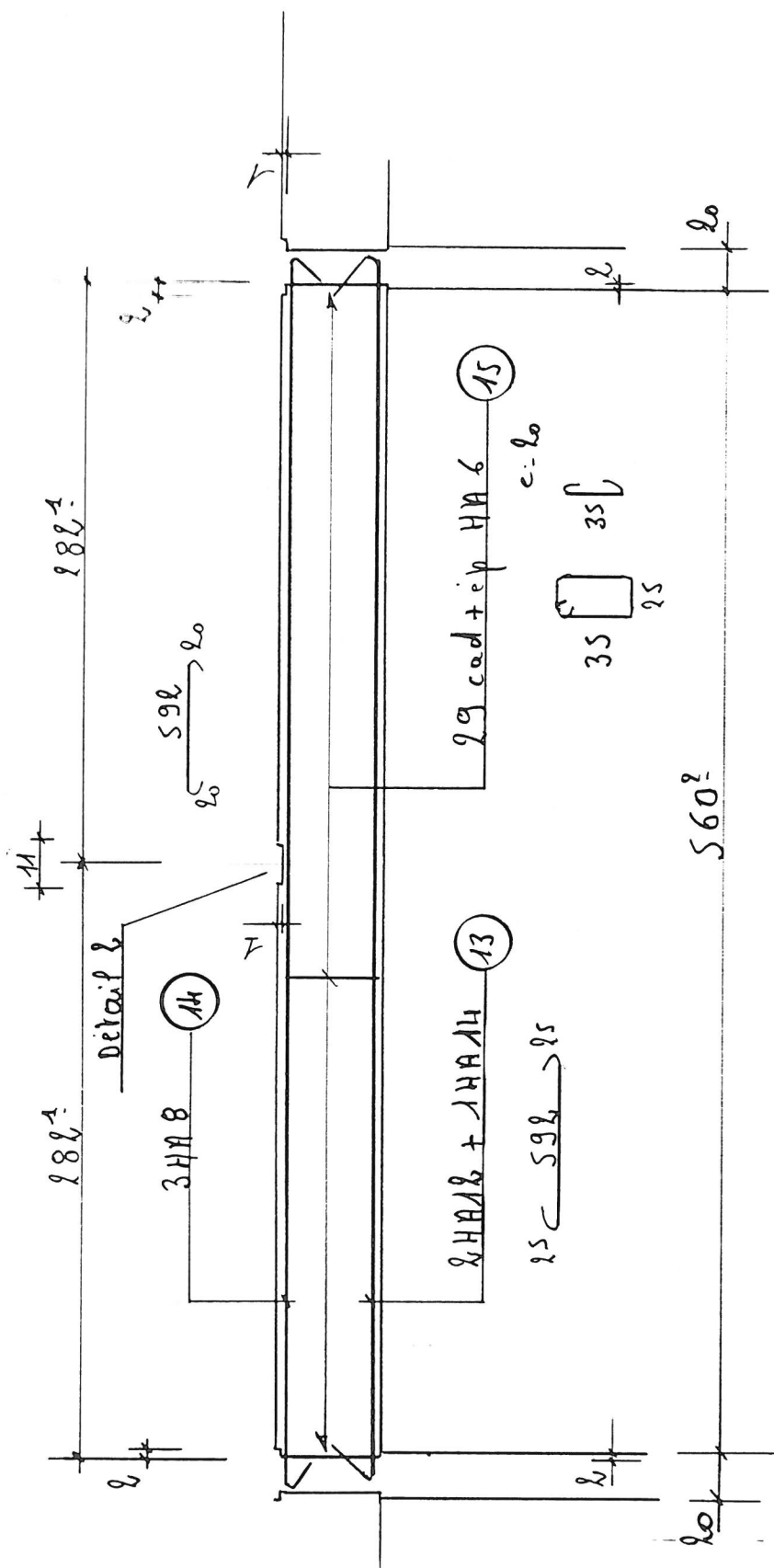


Variable	Age	Gender
----------	-----	--------

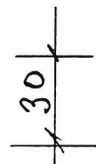
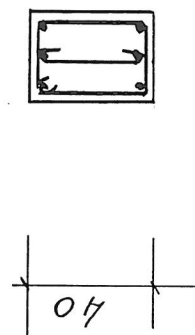


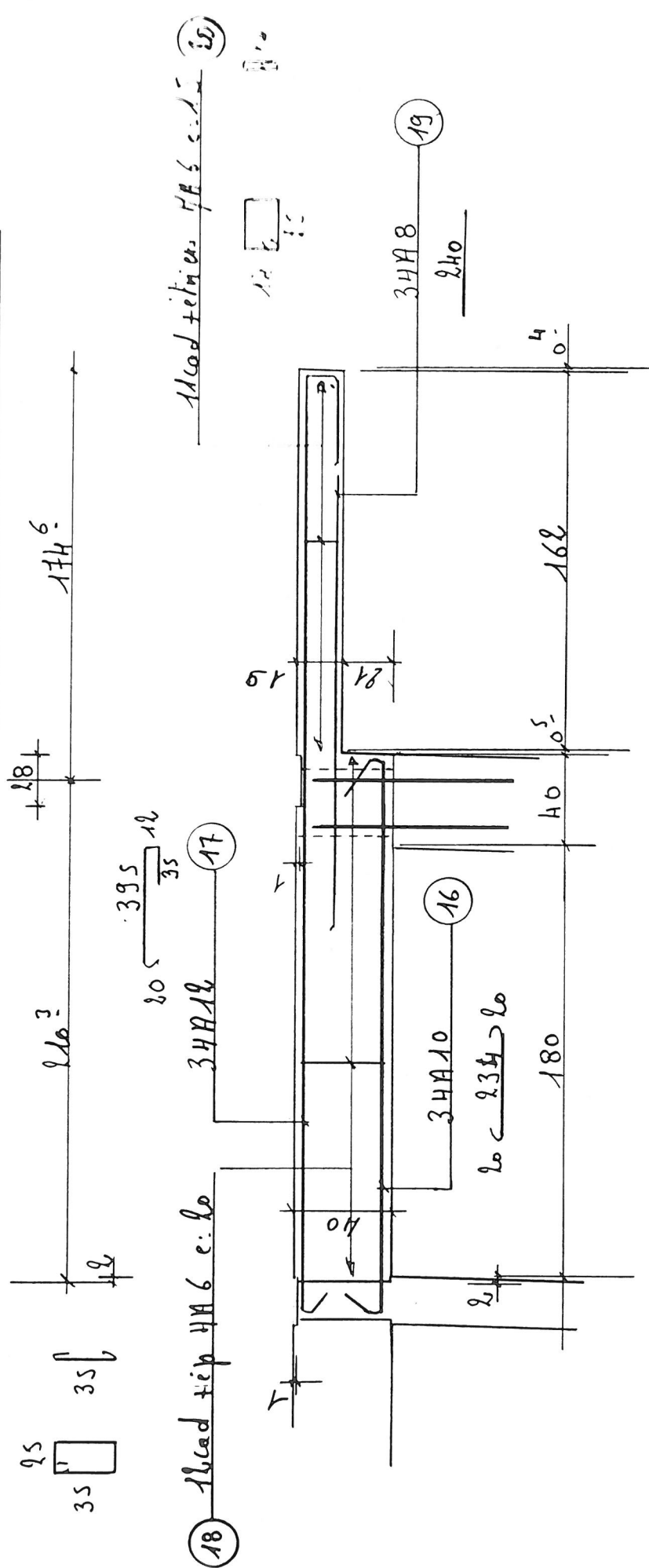
30

- Poudre 2 - nb 4 -



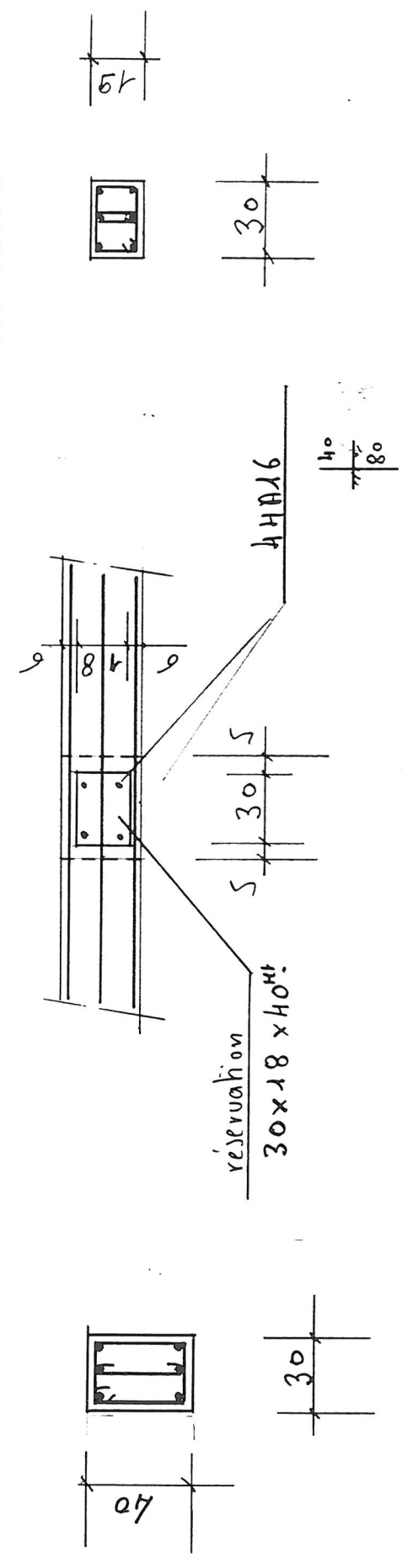
Levage 2 et 12



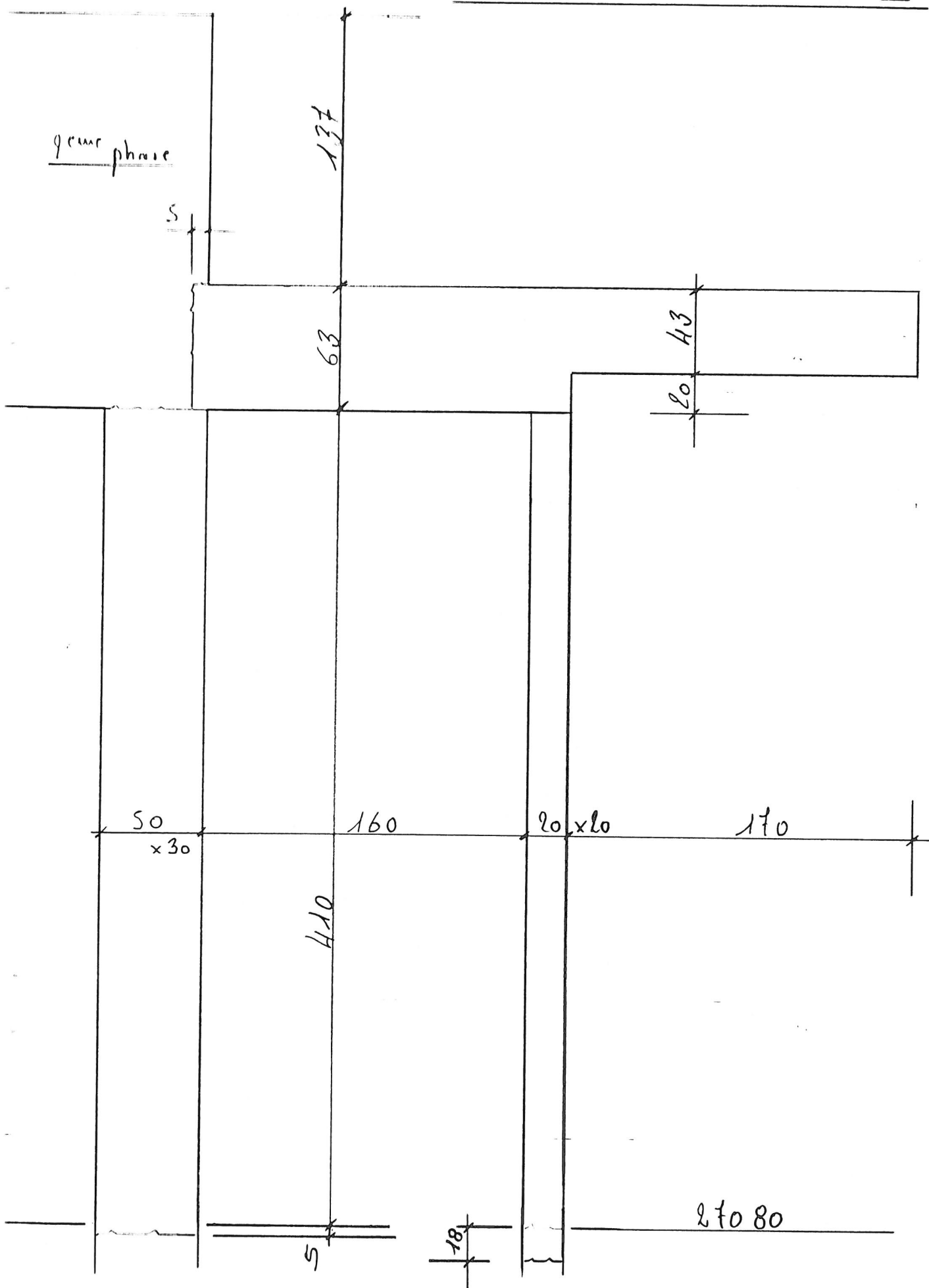


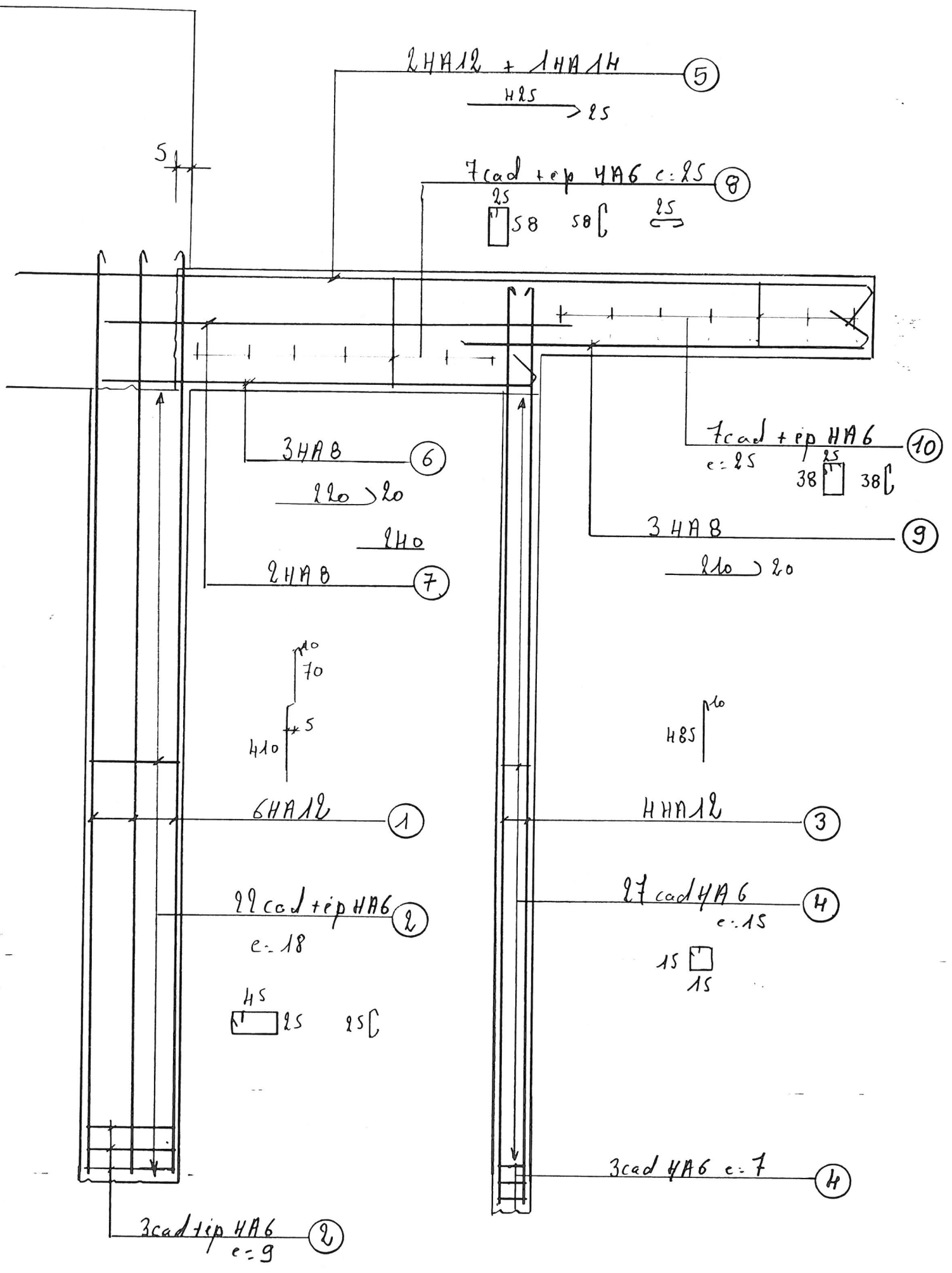
page 9 & 12
 $\sqrt{60}$

Ne pas couper les aciers dans la réservation

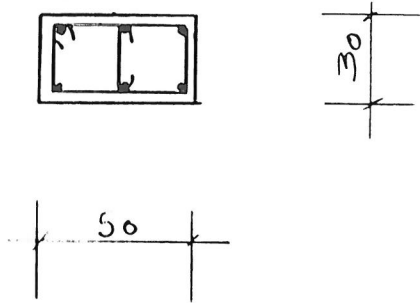


Consoles - nb 7

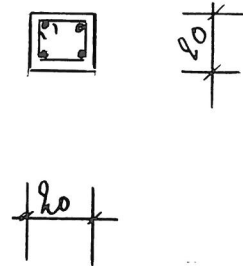




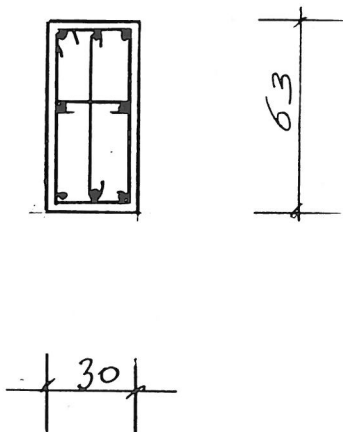
Poutres 50x30



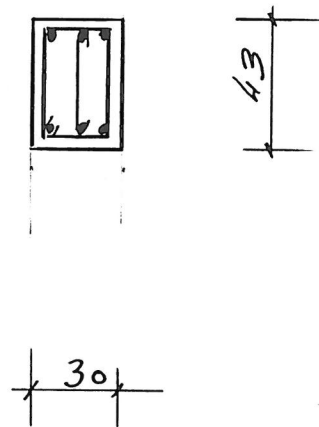
Poutres 20x20



Poutres 30x63^{HT}

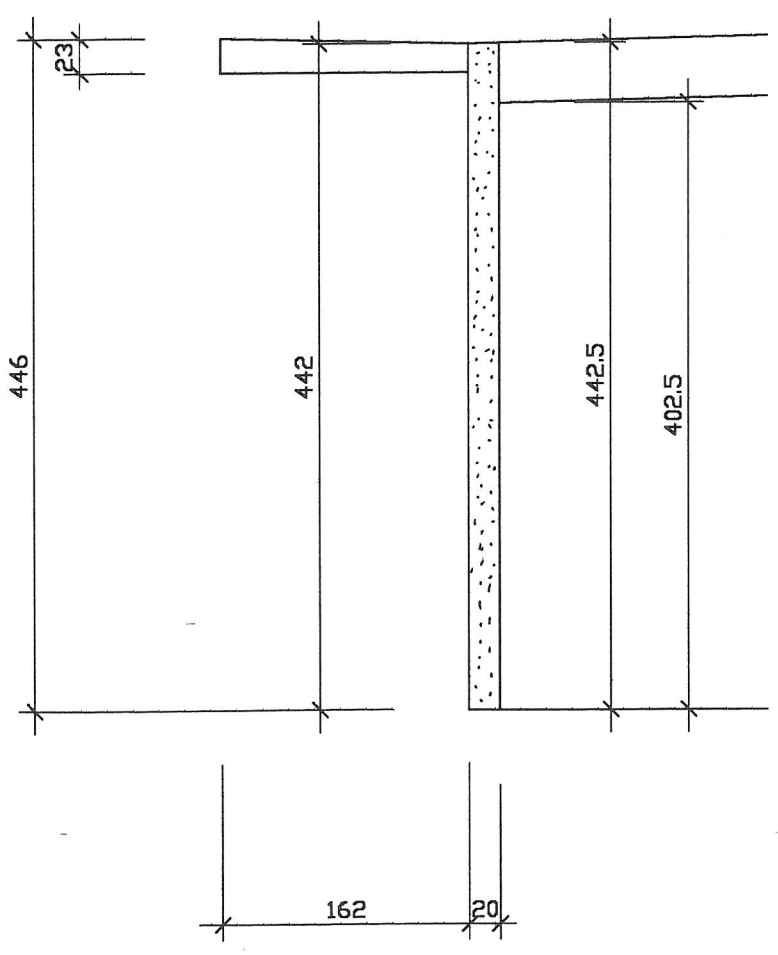


Consoles 30x43^{HT}

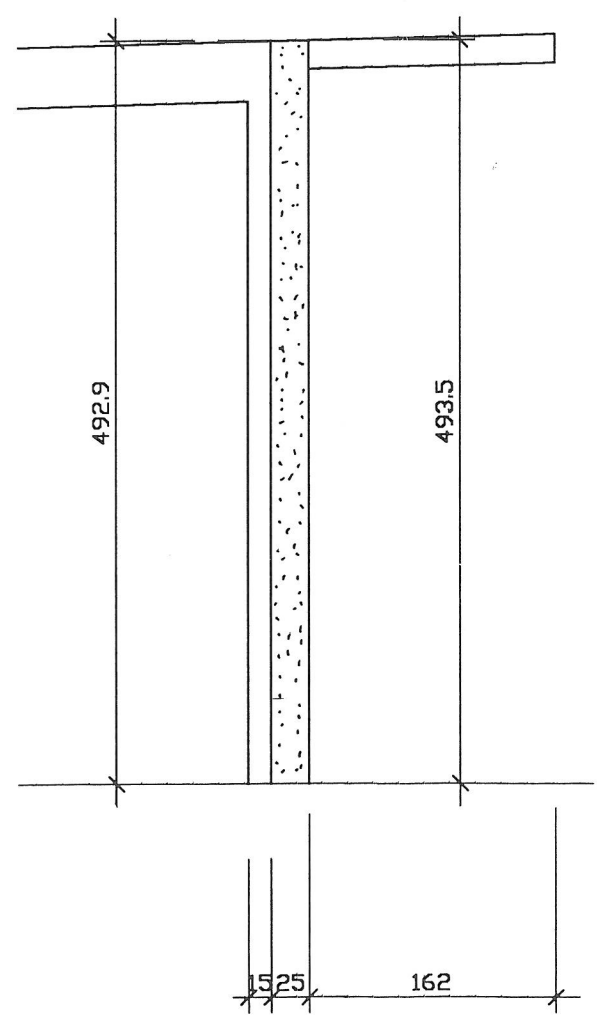


- arase des voiles -

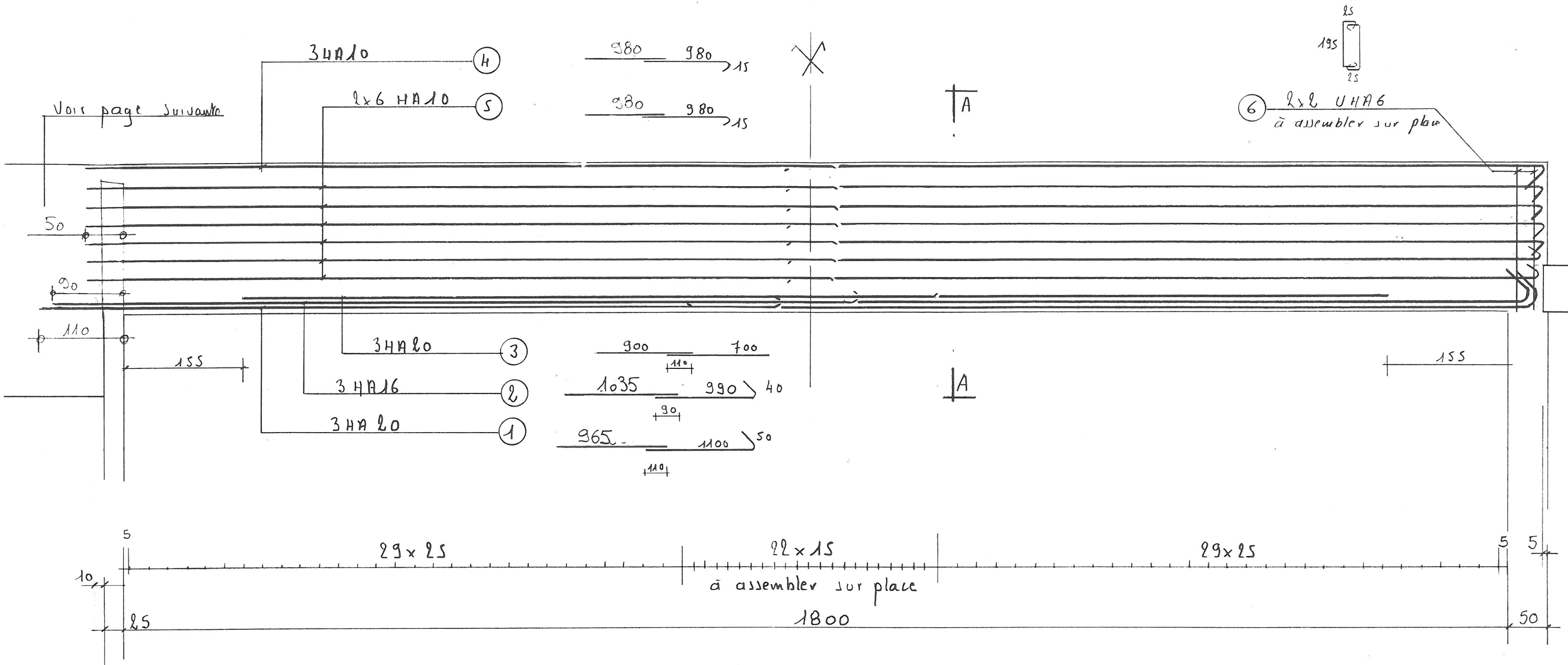
- File A -



- File F -

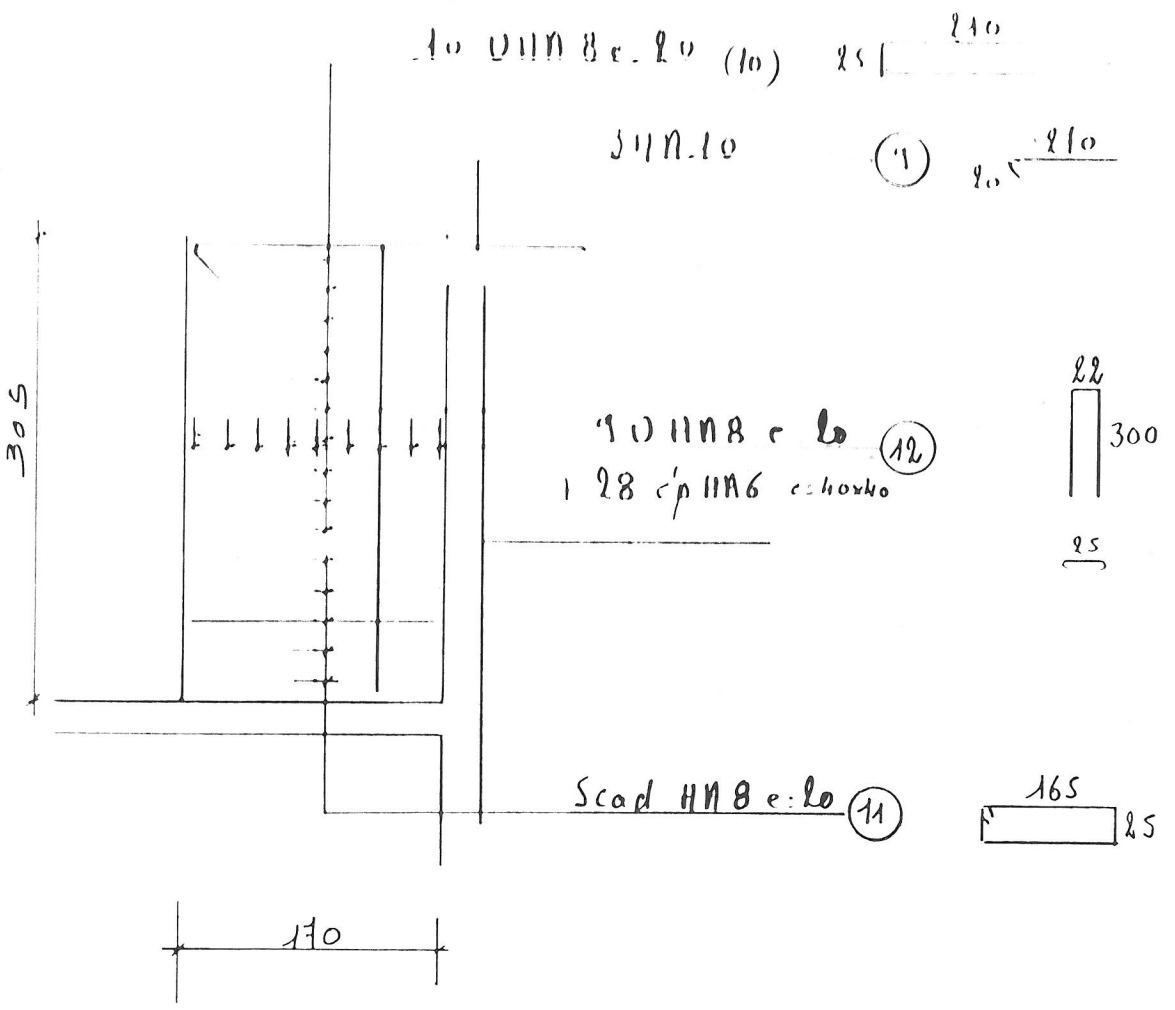


Poutres 30x200^{mm} nb: 7

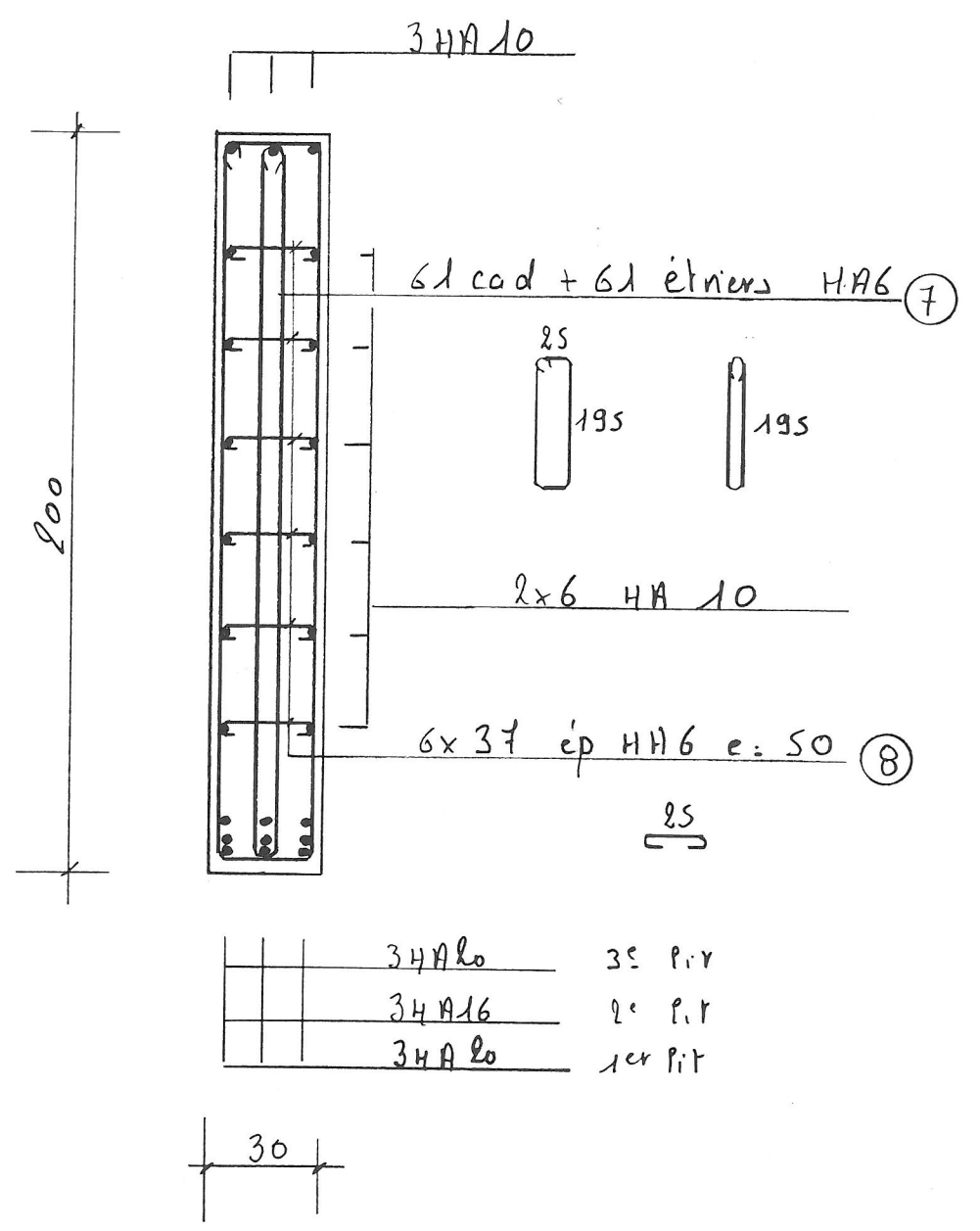


- Poutre livrée en 2 parties -

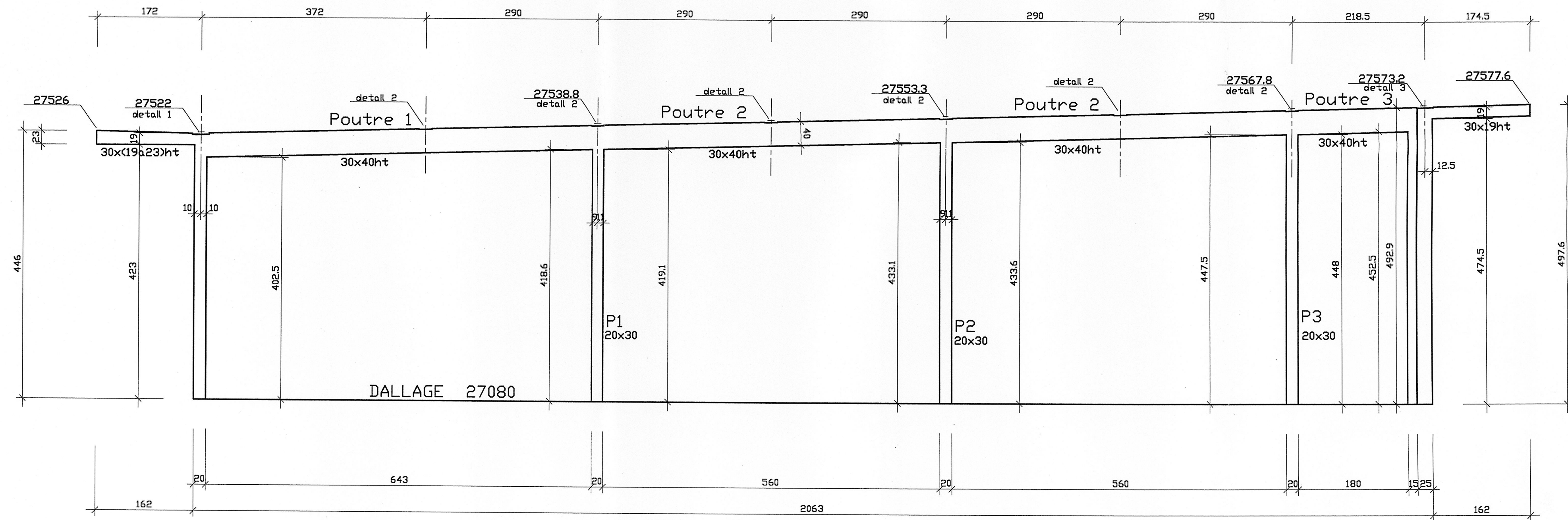
1. Arcmiles Poutres



- A-A -



Pignons



-Z.Z-

